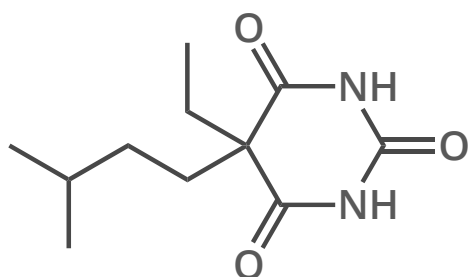


A BRIEF SUMMARY OF INTRAVENOUS ANAESTHETICS

Key: **B** BARBITURATE **BD** BENZODIAZEPINE **A** ARYLCYCLOHEXAMINE **I** IMIDAZOLE **P** ALKYL PHENOL ● RAPID-ACTING AGENTS ● SLOWER-ACTING AGENTS

AMOBARBITAL **B**

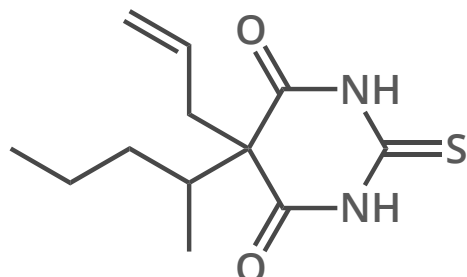
ALONG WITH OTHER BARBITURATES, PREVIOUSLY USED AS A 'TRUTH SERUM'



Intermediate duration of action. It is a hypnotic agent, and can be used to treat insomnia. It was also used by the US army in WWII as an attempted treatment for shell shock, but proved largely ineffective.

THIAMYLAL **B**

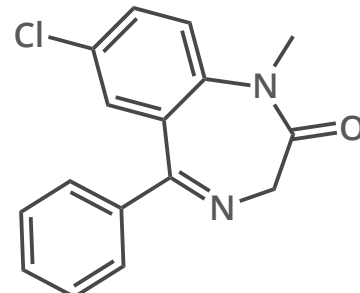
LIKE OTHER BARBITURATES, STRONG BUT SHORT-ACTING



Very short duration of action. Thiamylal is still in current use as an induction agent, and is also used as an anti-convulsant to limit the side effects experienced from the use of other anaesthetics.

DIAZEPAM **BD**

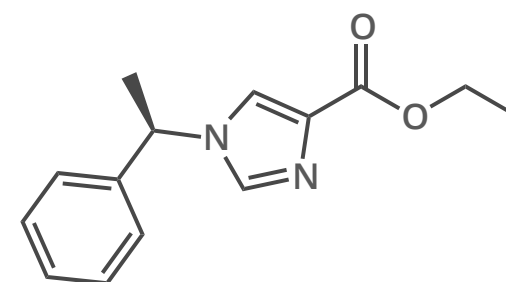
MORE COMMONLY KNOWN BY ITS BRAND NAME, VALIUM



Long duration of action. In its use as an anti-anxiety medication it has been nicknamed 'Mother's Little Helper'. In anaesthesia, it is often used to induce moderate sedation. Also used for benzodiazepine dependence.

ETOMIDATE **I**

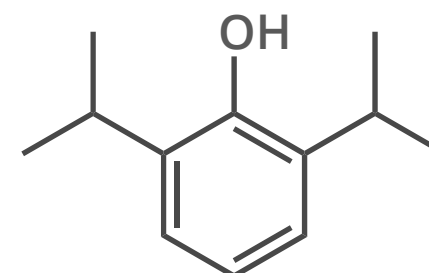
FREQUENTLY USED FOR ANAESTHESIA FOR EMERGENCY INTUBATION



Fairly short duration of action. Used as an induction agent for short surgical procedures; the chances of a large drop in blood pressure are lower than for other anaesthetics. No longer used very widely.

PROPOFOL **P**

HAS LARGELY REPLACED THIOPENTAL FOR INDUCTION OF ANAESTHESIA



Short duration of action. Widely used for both induction and maintenance of anaesthesia, and often given with opioids to help ease pain. Awakening is rapid and can also be accompanied by mild euphoria.

1929

1934

YEAR AVAILABLE FOR CLINICAL USE

1950

1957

1966

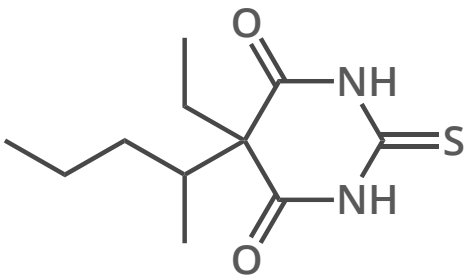
1973

1977

1978

THIOPENTAL **B**

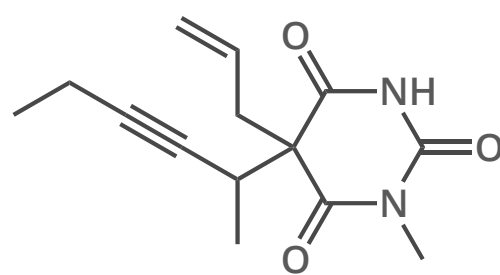
PREVIOUSLY USED FOR LETHAL INJECTIONS IN THE USA



Very short duration of action. Its use in lethal injections was ceased after the EU banned its export for this purpose. Used as an induction agent to induce loss of consciousness, but largely replaced by propofol.

METHOHEXITAL **B**

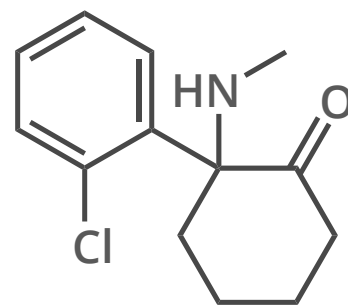
LOWERS SEIZURE THRESHOLD; USEFUL FOR ELECTROCONVULSIVE SHOCK THERAPY



Very short duration of action, and faster recovery rate than with some other barbiturates. Also cheaper than propofol. Commonly used for outpatient surgical and dental procedures.

KETAMINE **A**

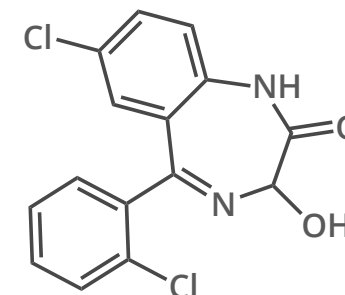
ALSO USED AS A RECREATIONAL DRUG



Short duration of action. Doesn't suppress breathing as much as other anaesthetics, but can also cause hallucinations. Often used to induce and maintain anaesthesia in severely injured patients.

LORAZEPAM **BD**

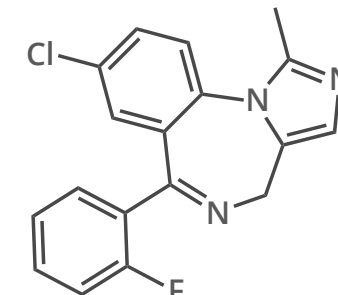
ALSO USED FOR SHORT-TERM TREATMENT OF ANXIETY



Long duration of action. Often used to treat anxiety disorders under the brand name 'Ativan'. Sometimes given before awake procedures as it can also prevent the formation of new memories.

MIDAZOLAM **BD**

REPLACED THIOPENTAL FOR USE IN LETHAL INJECTIONS IN THE USA



Short duration of action. Midazolam is two to three times as potent as diazepam, and has a faster onset. Also used in end-of-life care to help reduce agitation and anxiety, and in the management of seizures.

