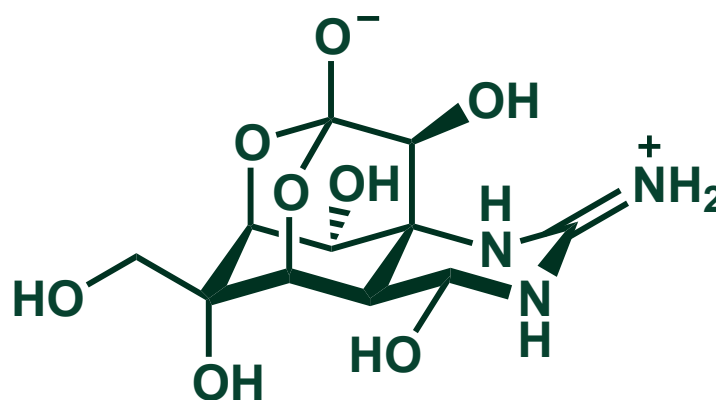
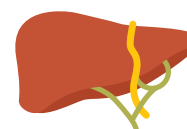


FUGU & TETRODOTOXIN



TETRODOTOXIN

MAIN LOCATIONS



liver

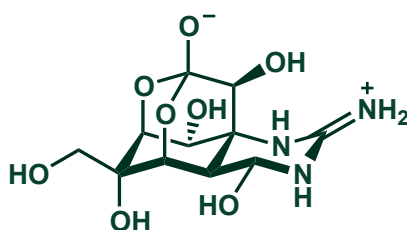


skin



sex organs

Tetrodotoxin is produced by bacteria that live in pufferfish. The parts of the fish which contain high levels of the toxin must be skillfully removed before eating. Tetrodotoxin is heat stable so can't be broken down by cooking.



blocks nervous system messages



causes loss of sensation, paralysis, respiratory arrest, and death.



The estimated median lethal dose of tetrodotoxin is 0.33 milligrams per kilogram of body weight. There is no known antidote for the toxin.

